

Agile + DevOps **WEST**

A TECHWELL EVENT

AD52

Leading & Coaching Teams

4:30 PM

AD52 - What Japanese Shinkansen Trains Can Teach Us about Agile

Presented by:

Matthew Weinstock

Align Technology

Brought to you by:



888-268-8770 · 904-278-0524 - info@techwell.com - <https://agiledevopswest.techwell.com/>

Matthew Weinstock

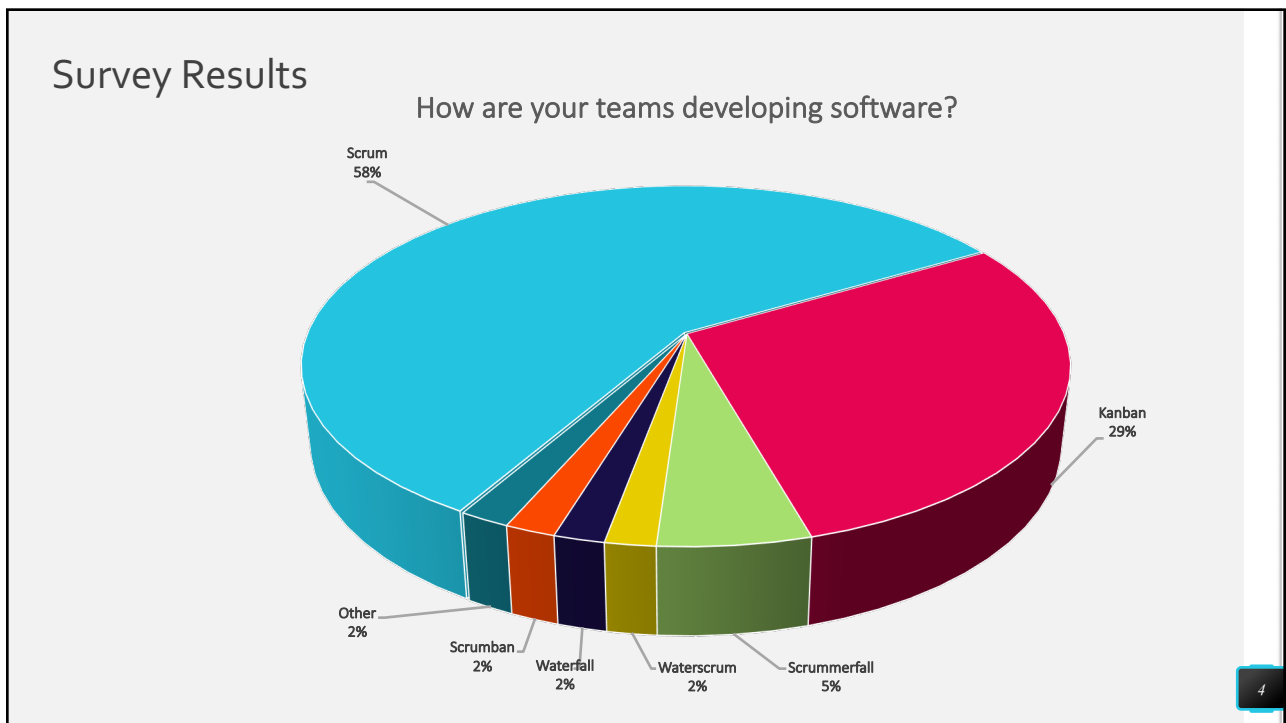
Matthew Weinstock is the director of Global SQA at Align Technology. A developer turned tester, Matt has held various roles in his SQA career, from manual tester to automation engineer to leading global quality teams in large public enterprises, and everything in between. Matt has always been passionate about agile and organizational transformations, never forgetting that people are the keystone to every company's success. Matt is proud to be a mentor and coach, encouraging an agile mindset and building trust throughout his organizations. With this people-centric approach to leadership, he has been able to create opportunities for change within organizations that unleash their true potential. Matt lives in Raleigh, North Carolina, and enjoys spending time with his family, traveling the world, and hiking the great outdoors.



Matthew Weinstock

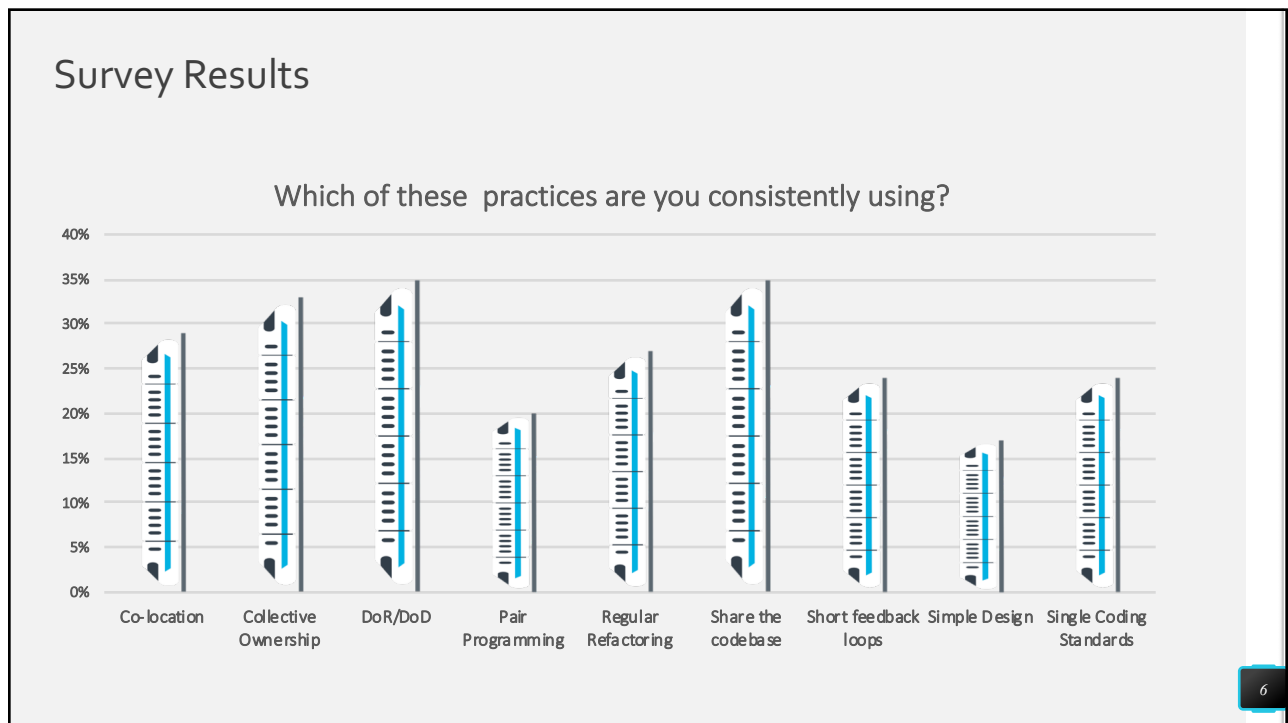
Director of Global SQA
Align Technology





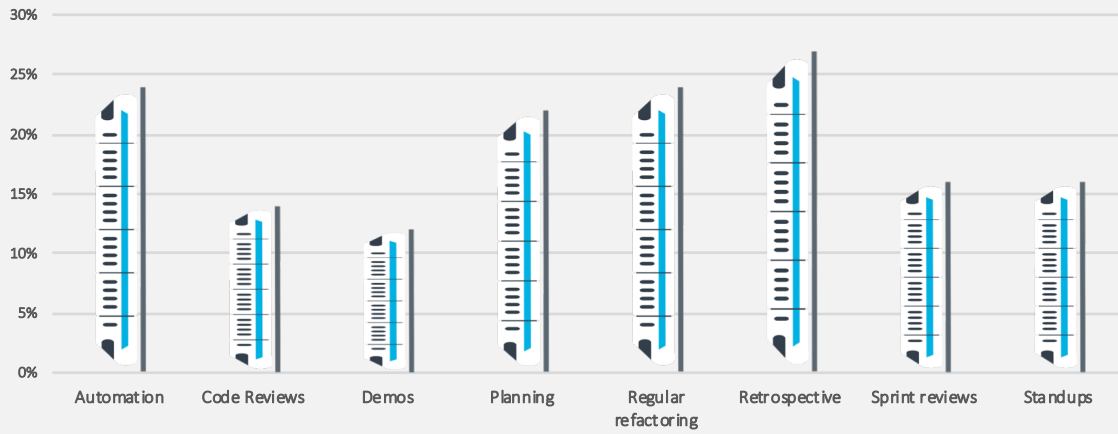
ATDD/BDD/TDD	Automation	Backlog refinement
Co-location	Code reviews	Collective ownership
Continuous integration	Demos	DoR/DoD
Pair Programming	Planning	Regular refactoring
Retrospective	Sharing the codebase	Short feedback loops
Simple design	Single coding standards	Standups
	Sprint reviews	

5



Survey Results

If the team can't meet timelines, which practices are the first to go?



7

Is this what you thought Agile was supposed to be like?

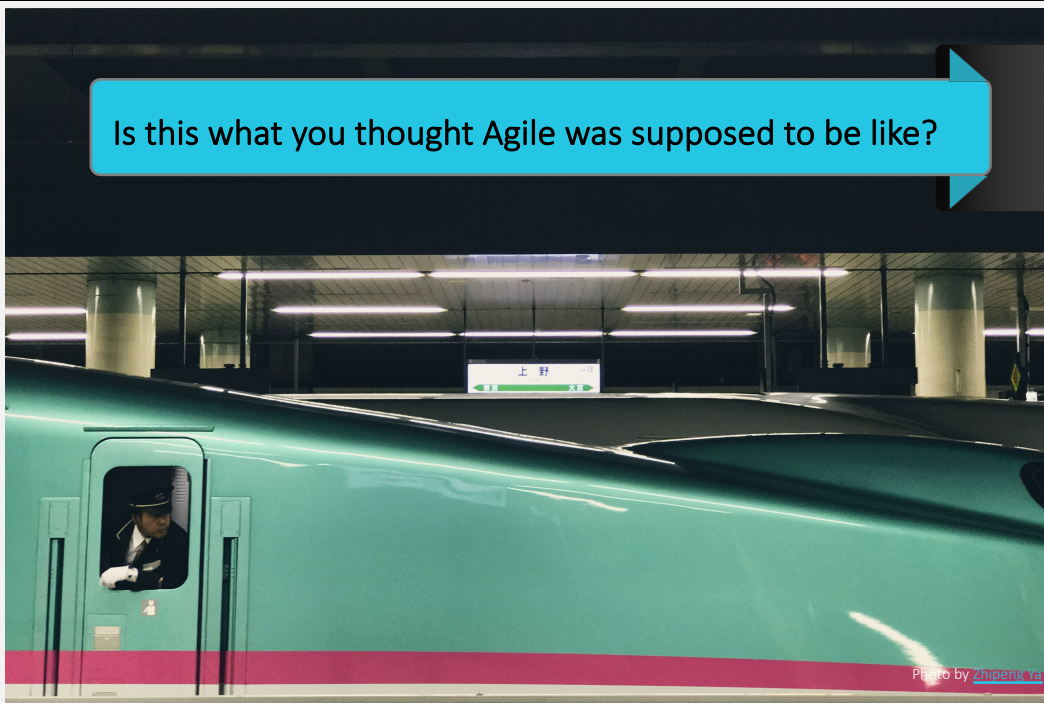
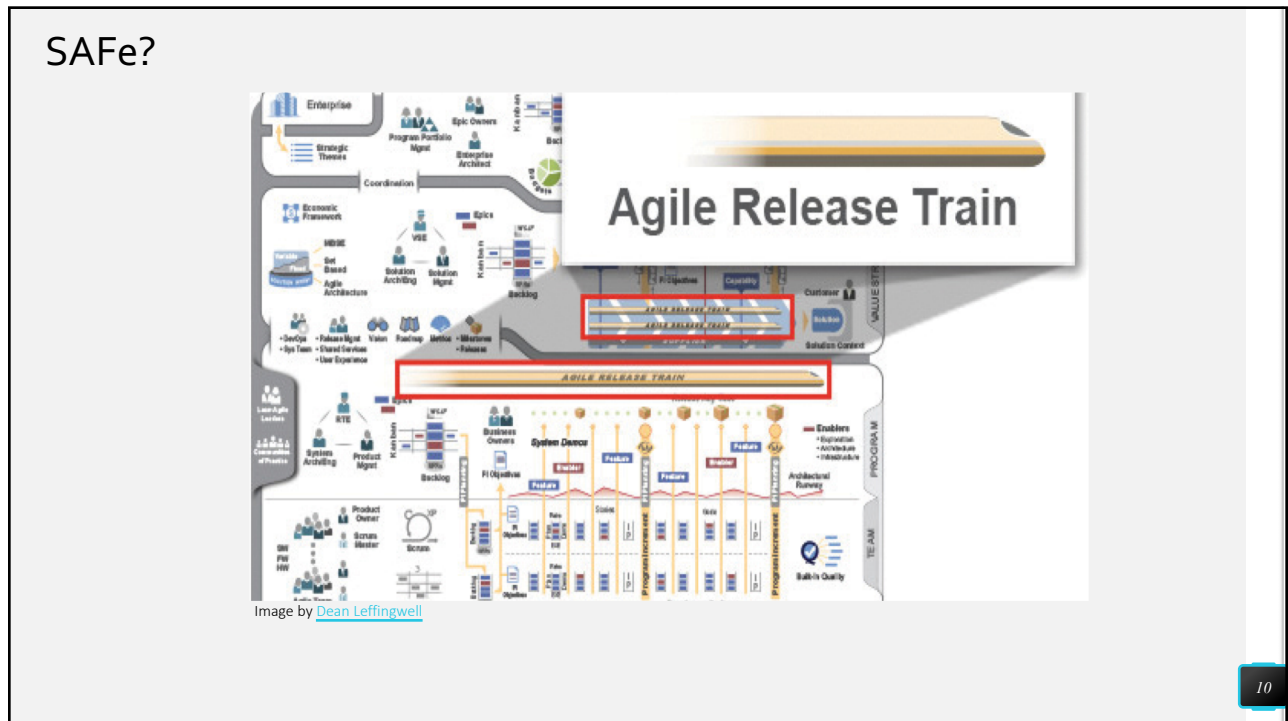
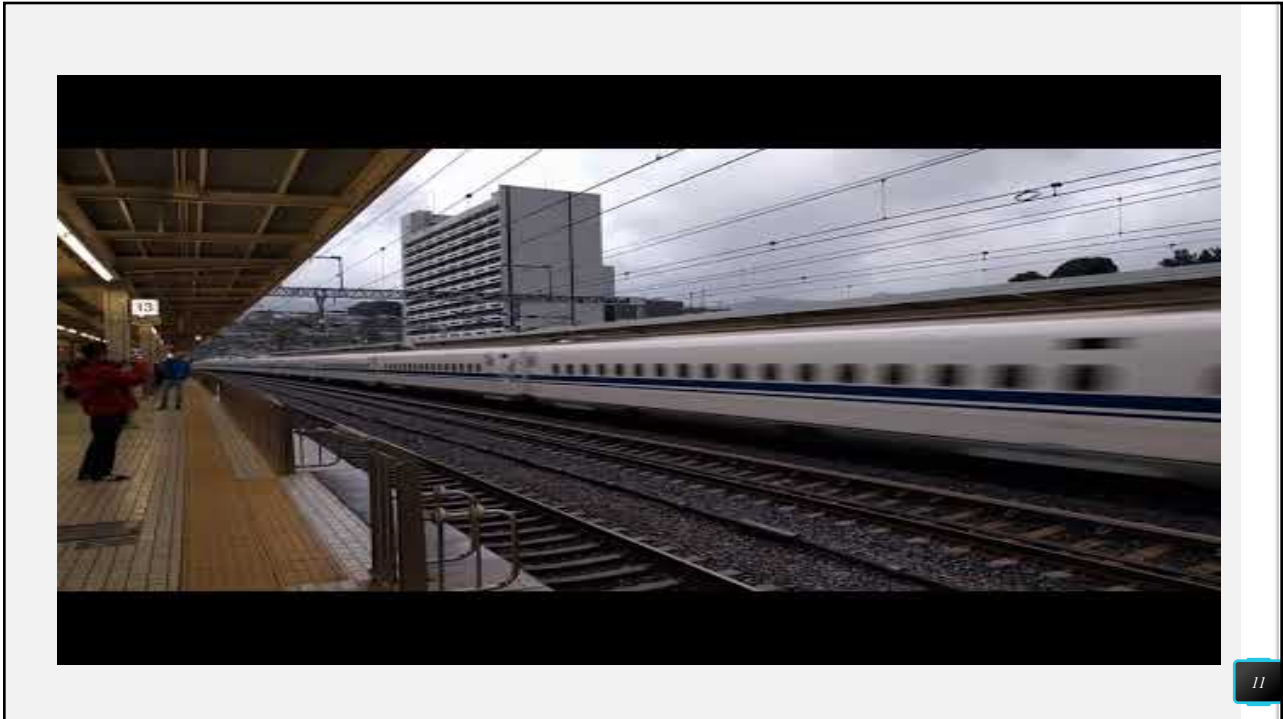


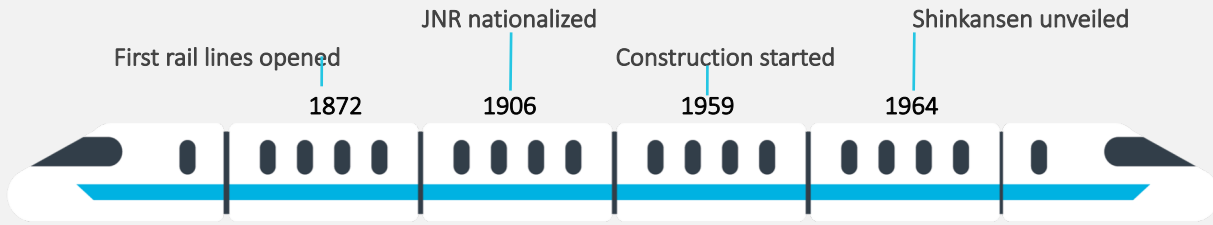
Photo by Zhibent Ya

8





History



Accomplishments

Limited express from ~7h - 4h - ~3h

67 miles of new tunnels, 3000 new bridges

2x as fast as any rail

100m passengers in first 3 years

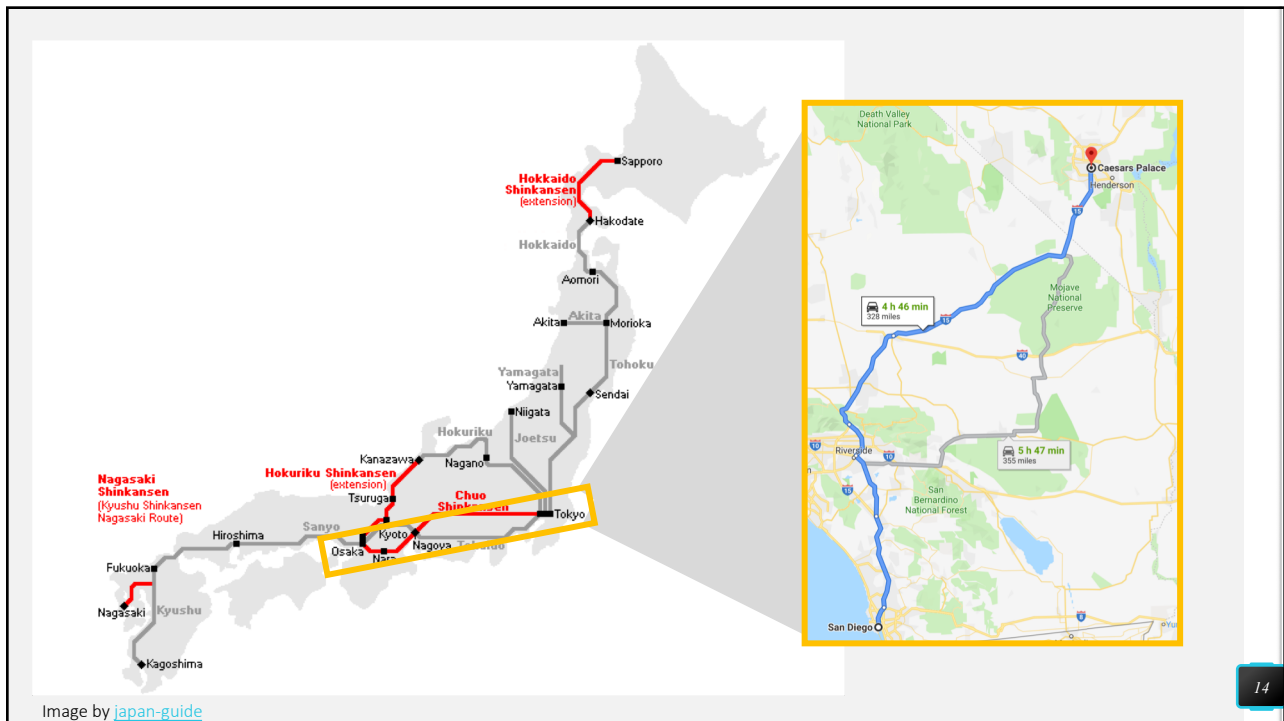


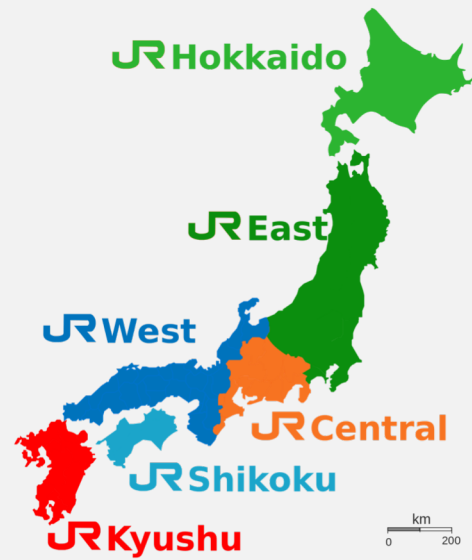
Image by [japan-guide](http://japan-guide.com)

JR at scale

1987 JNR was privatized and formed 9 new companies

Today:

- 6 companies, 9 lines
- Million passengers a day
- Trains leave Tokyo every 3m
- Next generation - 375 mph (603 k/hr)!
- 0 fatalities



15



What has made the Shinkansen and Japanese rail continuously successful?

16

Photo by pixabay

Short Feedback Loops

17

Short Feedback Loops

Fastech 360

Experimental trains to trial new technology

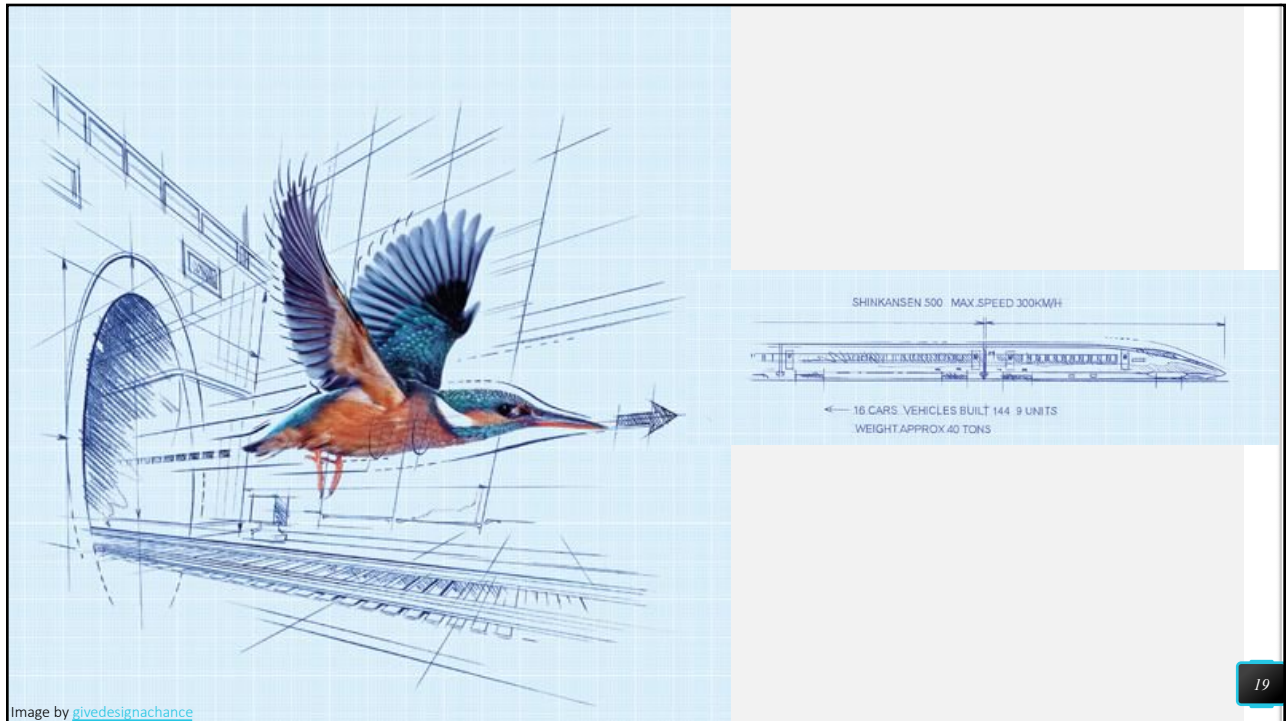
Test trains created tunnel boom at 360 km/h

Emergency air braking plates

Train currently operates on the Tohoku Shinkansen



18



Short Feedback Loops

Learn fast with small cost

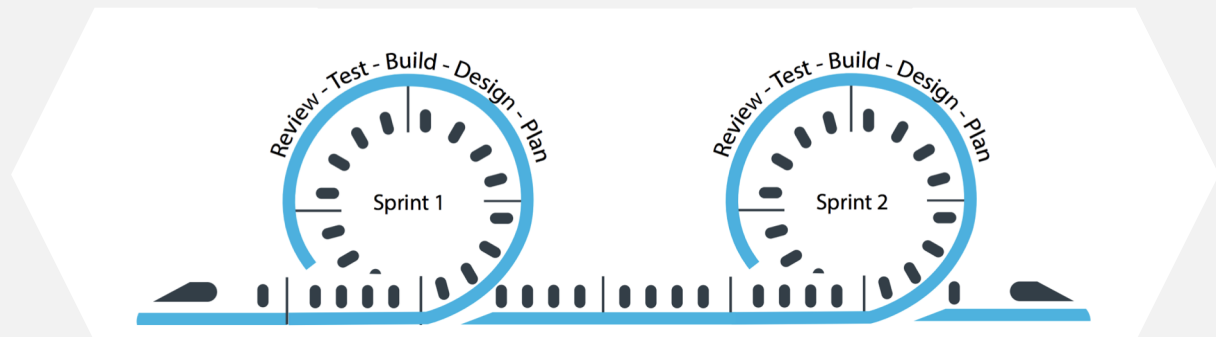
Get involved early!

Events are important!

Don't forget about testing!

Use production for further feedback

Canarying or A/B Testing



Customer Driven Development

21

Customer Driven Development



Photo by [Lover of Romance](#) on [commons.wikimedia](#)

Tracks through mountains

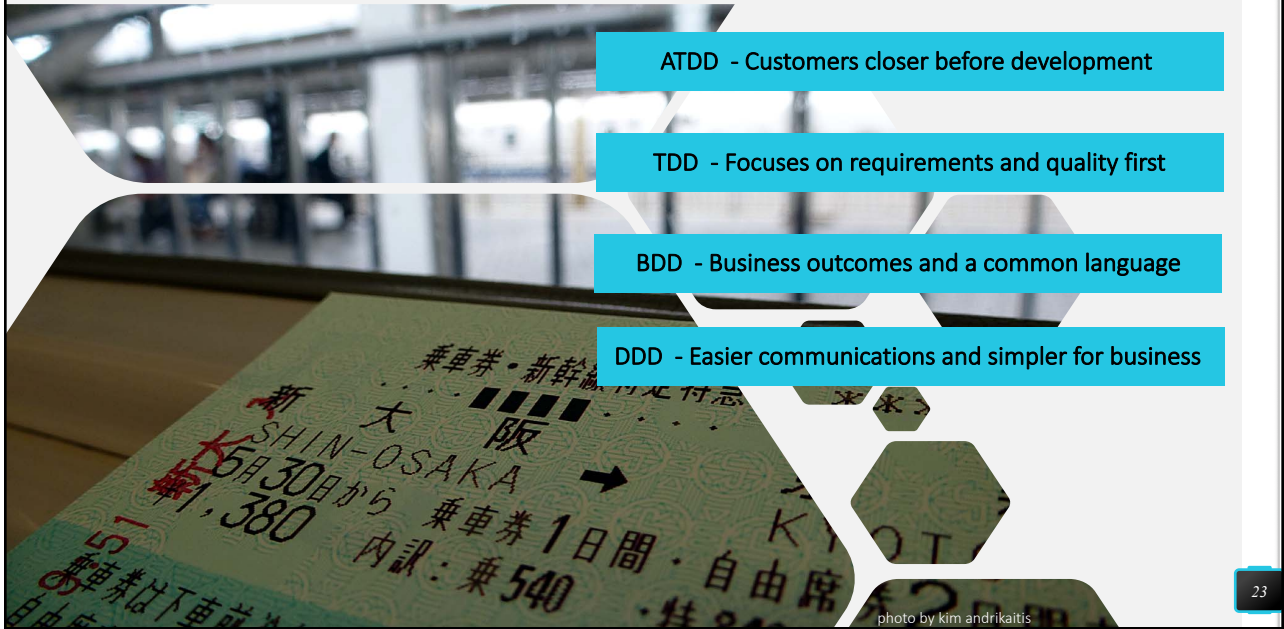
Quieter environment

Passenger comfort at speed

Runs on the subway lines!

22

Customer Driven Development



ATDD - Customers closer before development

TDD - Focuses on requirements and quality first

BDD - Business outcomes and a common language

DDD - Easier communications and simpler for business

photo by kim andrikaitis

23

Refactor! Refactor! Refactor!

“The philosophy has not changed even with the advancement of technology. The brakes and signals have since been digitalized and improved to enable the system to run at higher speeds. **As the basic philosophy has not changed since its beginning, we are always able to keep up with technological developments.**”

- Osamu Onodera
Shinkansen Driver

25

Rigorous, regular refactoring



Powering of all the axles

Urgent Earthquake Detection and Alarm System

Stationary Energy Storage System

Mini-Shinkansen

Trains built to last only 15 years

26

Photo by [jppukucho](#)

Rigorous, regular refactoring

A learning tool about the code

Code starts to smell fast; refactoring keeps it fresh

Moves to Single Source of Truth, removes dup code

Investment in the future

Helps with scalability



27

Automate All the Things!

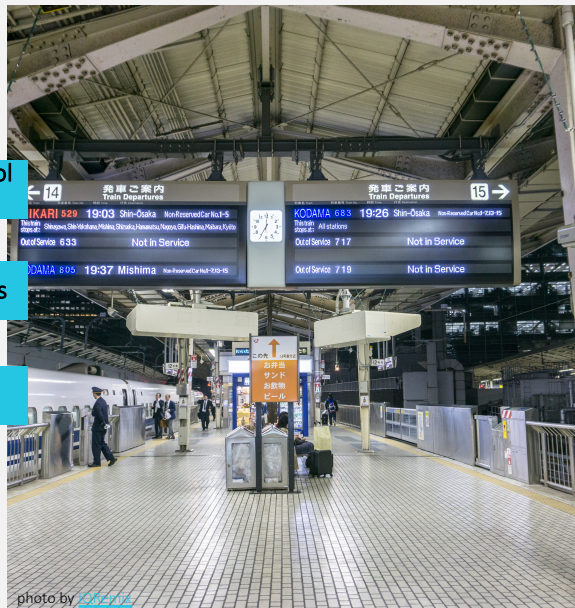
28

Automated Systems

Autonomous Decentralized Transport Operation Control System (ATOS) for Tokyo center

ATOS directs train drivers through 16x16 lamp matrices

ATC (Automatic Train Control) – no trackside signals



29

“For example, when the inter-vehicle distance from the front train becomes shorter, **the machine automatically performs the actual operations instead of the driver**, such as slowing down and bringing the train to a stop, while also displaying the signals on the monitor at the driver's seat.”

- Yoshiyuki Onda

Railway Operations Headquarters at East Japan Railway Company (JR East)

30

Automated Systems

Build automation - continuous integration

Eliminates sources of variation - elimination of defects

Test automation should be part of your DoD

Consumer Driven Contracts for integration protection

Production issue dashboards and automatic notifications

Serious cost reductions



31

Single Codebases and Single Coding Standards

32

Single Codebase + Single Coding Standards

The first Shinkansen produced by 6 different manufacturers

Manufacturers cooperating since 1964

In 2007 the reliability of the Shinkansen was 60x higher than French TGV trains

Interoperability between companies even with different technologies and equipment



photo by [Sotter Gomi](#)

33

Single Codebase + Single Coding Standards

Maintain and extend code

Single source of truth - development and test

Short time to comprehension of code

Need to swarm? No problem!

Encourages responsibility for the quality of the whole

Collective Ownership - Promotes pride and happiness



photo by [tokyoform](#)

34

Pair Programming

35

Pair Programming

First year spent in stations

On the job training lasts between 3 – 5 months

Experienced driver mentors & evaluates performance

Experienced driver recommends further training

If fit to operate, trainees take a test to become a driver

Start with local and regional trains before moving up



36

Pair Programming

96% of pair programmers enjoyed their work more than when they programmed alone.
95% were more confident in their solutions when they pair programmed

What does the Pair Programming provide?

- Shares best practices
- Faster on-boarding
- Builds rapport
- Harder to Procrastinate
- Identify and Reduce Bad Hires

Remote team pairing works too!



37

Safety is our No. 1 Concern

38



39

Calming departure and arrivals



40

指差喚呼 *shisa kanko*



41

Safety

5 Scrum values (focus, openness, respect, courage, commitment)

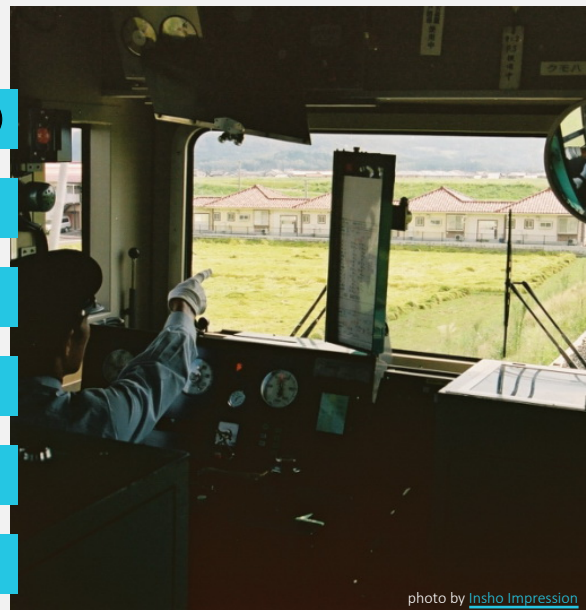
Psychological safety - no one is punished or humiliated

Team members are more confident in safe settings

Build trust in one another

Retro and iterate, no finger pointing on failed sprints

Open and consistent communication



42

